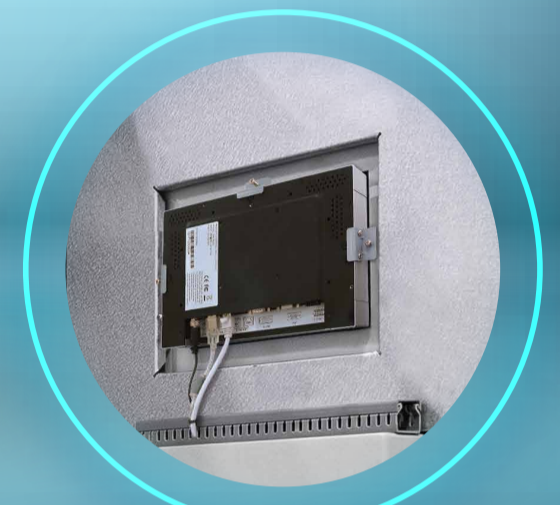


Universal Panel Computer for Battery Energy Storage System Applications

One single design to offer flexibility of installing the unit in Panel Mount for Battery Energy Storage System (BESS) applications. Easy installation and sleek thin bezel with one symmetrical design for both portrait / landscapes, fitting a variety of business requirements.



Front side



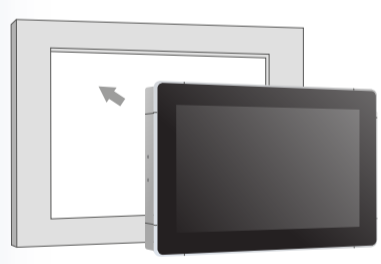
Rear side

[Click here for more information on Sysgration's Battery Energy System Solution](#)

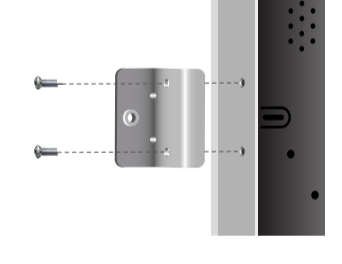
Sysgration's UPC series offers panels with 10.1", 15.6", and 21.5" displays, and it can be viewed in portrait or landscape mode with one symmetrical design. Rich I/O allows users to connect the Battery Management Systems (BMS) with our UPC (via USB or RS-422) to monitor the energy status of each battery parameter, total current, and total voltage in every battery pack.

4 easy steps to install our UPC

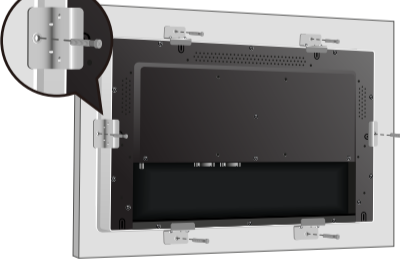
- 1**



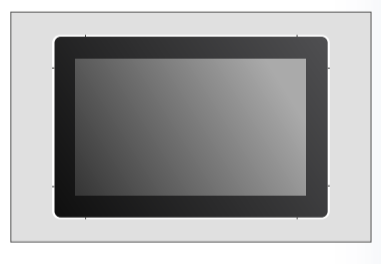
Insert the UPC into the cutout area
- 2**



Place the mounting bracket to the UPC and fasten it, tighten each mounting bracket on every side
- 3**



Fasten the screw to fix the bracket to the panel
- 4**



Installation complete

Product offering



UPC-A

Intel® Pentium® N4200 Quad Core Processor



UPC-W

Intel® Core™ i3-8145UE processor



UPC-N

NXP i.MX8M Quad ARM 4x Cortex A53 1.3GHz